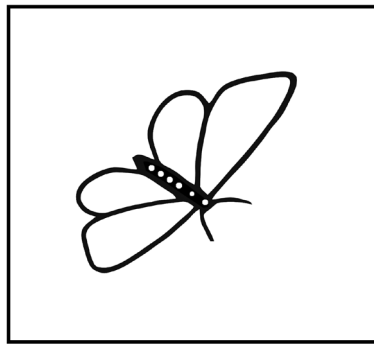
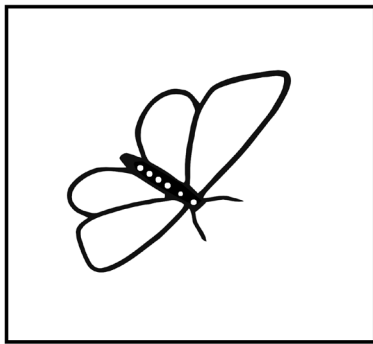


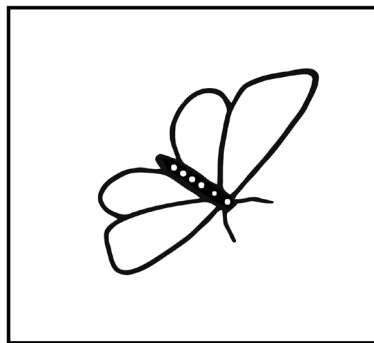
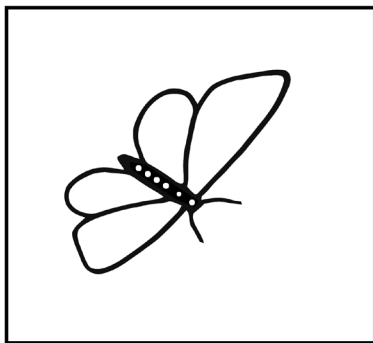
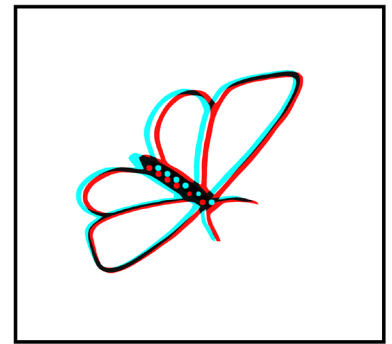
Understand and Avoid Window Violations

based upon a guide published on page 19 of the March, 2019 edition of *3D Window*, the bulletin of the Sydney (Australia) Stereo Camera Club using illustrations by the late Allan Griffin.

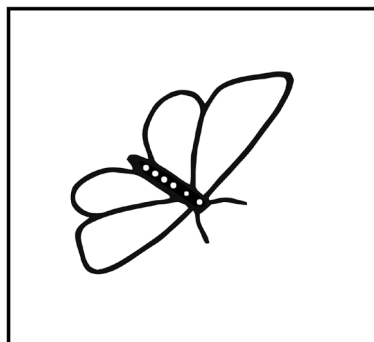
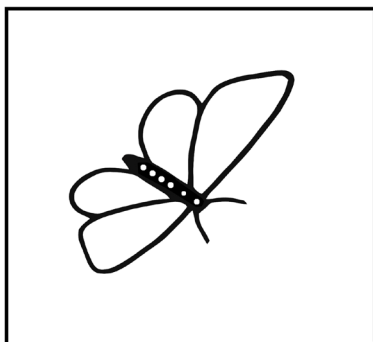
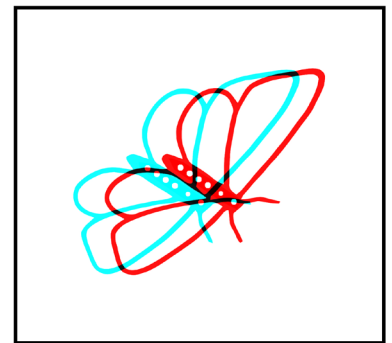
(Cleanup of artwork and anaglyph conversion by Herb Weiner, Cascade Stereoscopic Club)



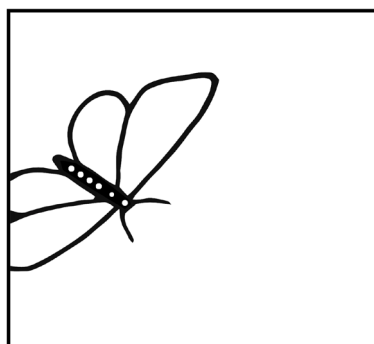
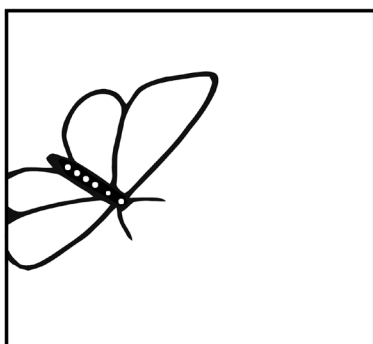
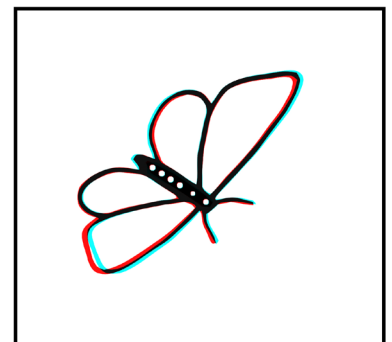
Just behind
the window:
Good



Too far behind
the window:
Bad



Through
the window:
Good



Window
Violation:
Very Bad
(If the front wing
is in front of the
window, why is
it chopped off
by the window
frame?)

